



ARCHITECTURAL METAL SIDING • ROOFING

3856 RUE IMELDA-LEFEBVRE, SHERBROOKE
QC J1N 1B2
(819) 791-3276

TECHNICAL FILE

DESIGN WALL

SPECIFICATIONS		
APPLICATION	WALL	
PANEL COVERING	DWF	12" (304.8mm)
	DWH	12" (304.8mm)
PANEL DEPTH	1 1/8" (29mm)	
MINIMUM PANEL LENGTH	3' (0.91m)	
MAXIMUM PANEL LENGTH	22' (6.8m)	

AVAILABLE	
MATERIALS	
ALUMINIUM	0.032" , 0.040" , 0.050" (0.8mm , 1.0mm , 1.27mm)
PAINTED STEEL	CALIBRE 24

EXPANSION FACTORS FOR SPACING	
PANEL LENGTH 22' (6.8m)	
STEEL	5/8" (8mm)
ALUMINIUM	11/16" (17mm)

INSTALLATION DETAILS

PAGE 2-3 → **HORIZONTAL APPLICATION • SOLID SUBSTRATE**

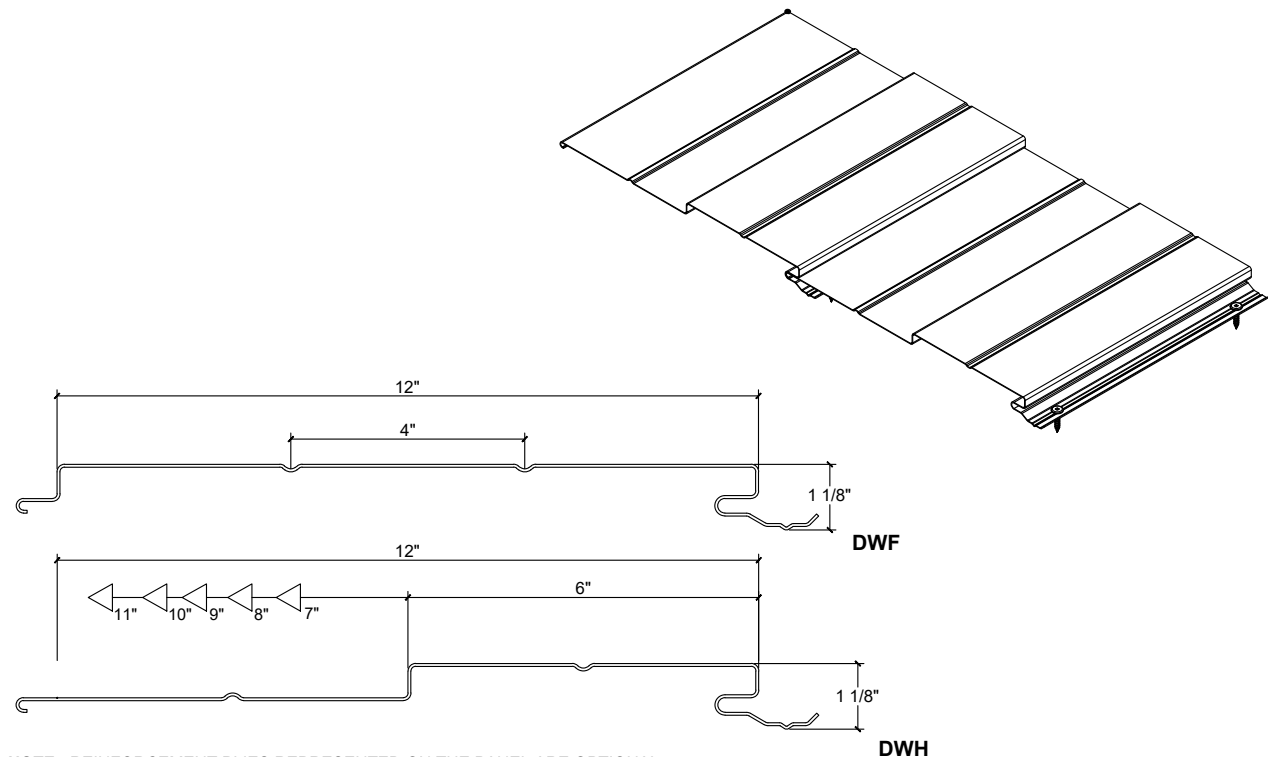
PAGE 4-5 → **HORIZONTAL APPLICATION • OPEN FRAMING**

PAGE 6-7 → **VERTICAL APPLICATION • SOLID SUBSTRATE**

PAGE 8-9 → **VERTICAL APPLICATION • OPEN FRAMING**

PAGE 10 PANEL INSTALLATION - SPECIFIC DETAILS

PAGE 11 TRIMS AND ACCESSORIES



NOTE : REINFORCEMENT PLIES REPRESENTED ON THE PANEL ARE OPTIONAL.



ARCHITECTURAL METAL SIDING • ROOFING

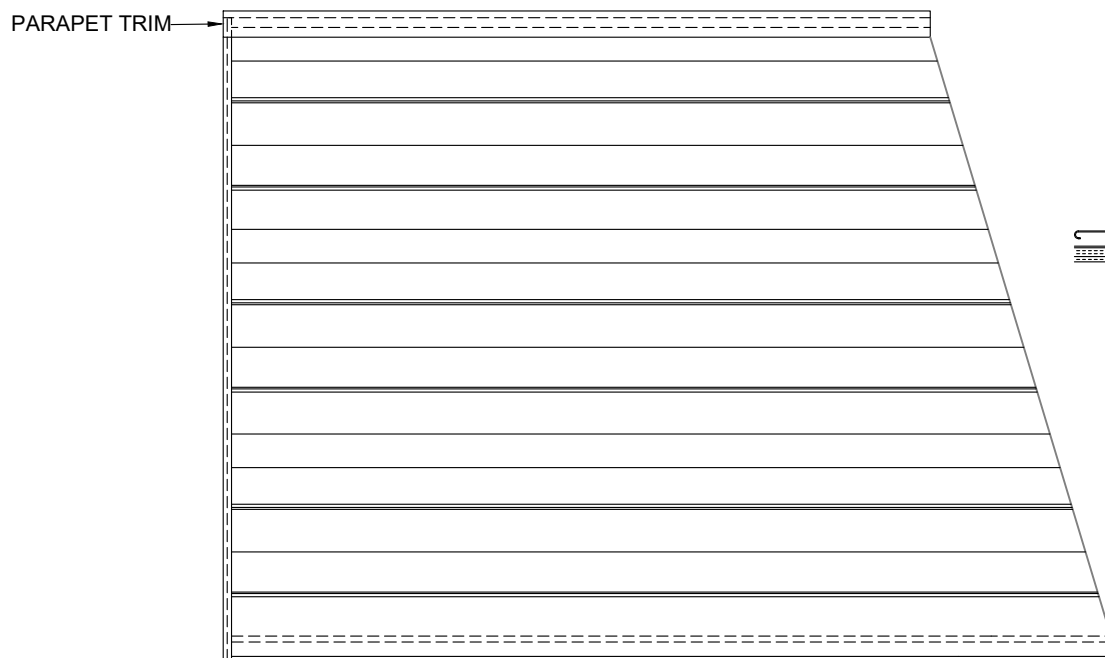
3856 RUE IMELDA-LEFEBVRE, SHERBROOKE
QC J1N 1B2
(819) 791-3276

TECHNICAL FILE

DESIGN WALL

HORIZONTAL INSTALLATION SOLID SUBSTRATE

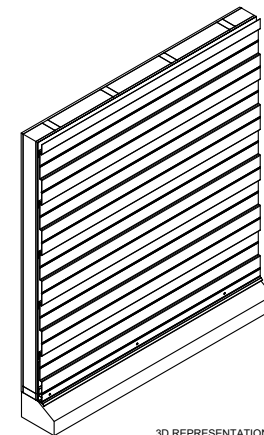
ELEVATION



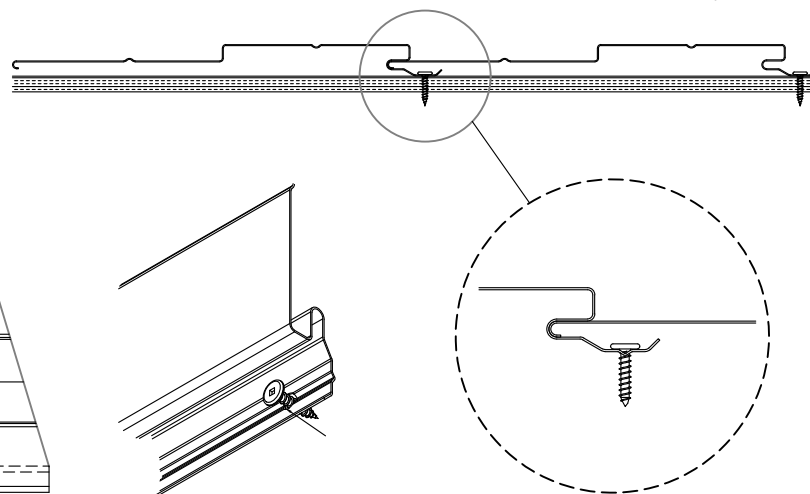
NOTES :

THE EXPANSION OF ALUMINUM AND STEEL DEPENDS ON A COMBINATION OF SEVERAL FACTORS: THE LENGTH AND WIDTH OF THE PANEL, THE THICKNESS OF THE MATERIAL, ITS COLOR, THE LEVEL OF SUN EXPOSURE, THE TEMPERATURE DURING INSTALLATION. PROVIDE SUFFICIENT EXPANSION SPACE ACCORDING TO THESE FACTORS (SEE EXPANSION FACTOR TABLE).

THE PANEL IS INSTALLED FROM TOP TO BOTTOM.

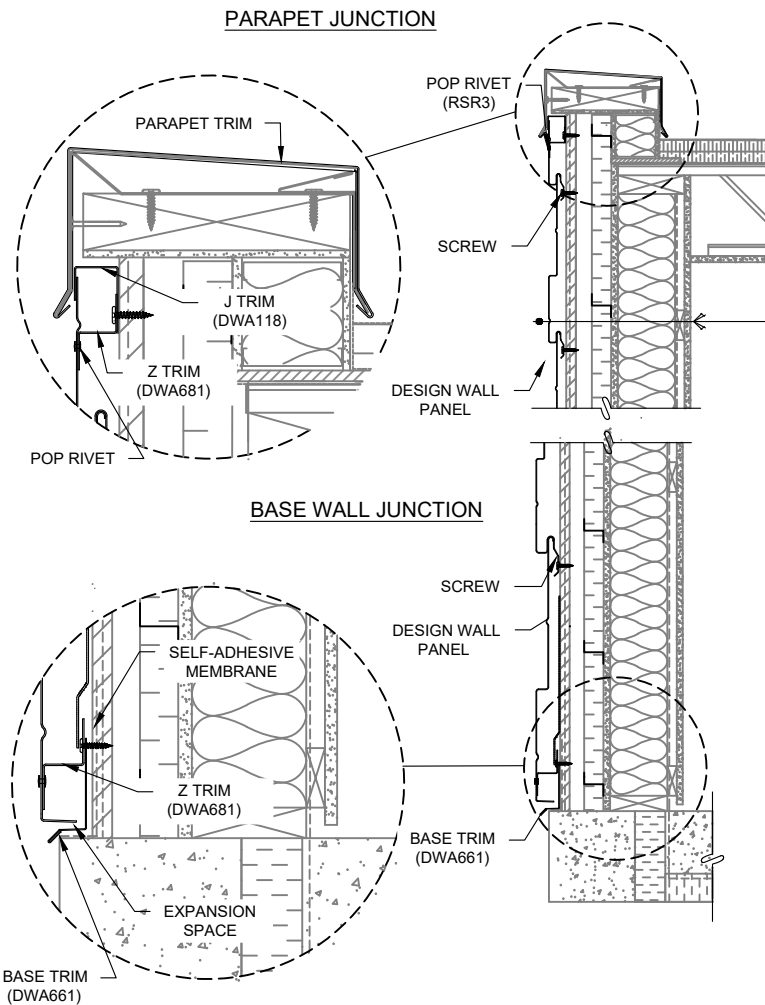


3D REPRESENTATION



HORIZONTAL INSTALLATION SOLID SUBSTRATE

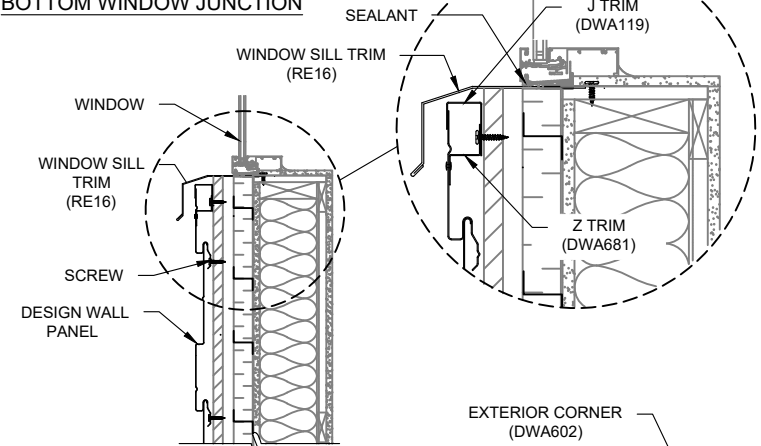
WALL STRUCTURE



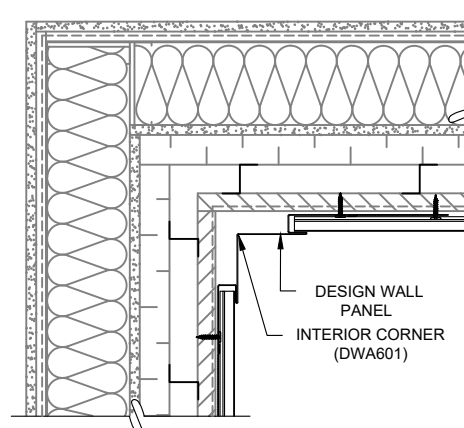
EXTERIOR WALL

- DESIGN WALL METAL PANEL
- SELF-ADHESIVE MEMBRANE
- 5/8" PLYWOOD SHEATING
- VERTICAL METAL OR WOOD SUBGIRT
- INSULATION PANEL
- AIR BARRIER MEMBRANE
- EXTERIOR GYPSE
- WOOD STUD
- VAPOR BARRIER MEMBRANE
- HORIZONTAL WOOD BATTEN
- GYPSE PANEL

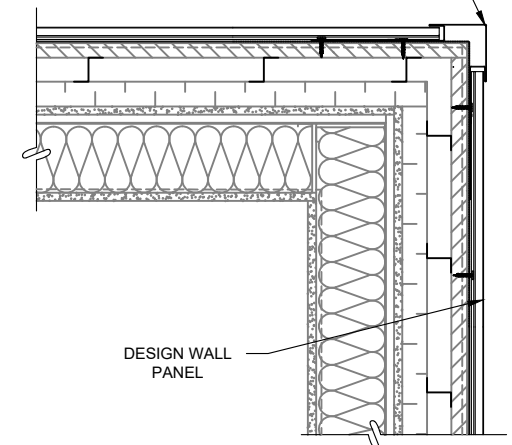
BOTTOM WINDOW JUNCTION



DESIGN WALL INTERIOR CORNER DETAIL



DESIGN WALL EXTERIOR CORNER DETAIL



NOTES :

PROVIDE A THERMAL EXPANSION SPACE AT THE BOTTOM OF THE PANEL
(SEE EXPANSION FACTOR TABLE)
WALL CUT FOR INFORMATION ONLY



ARCHITECTURAL METAL SIDING • ROOFING

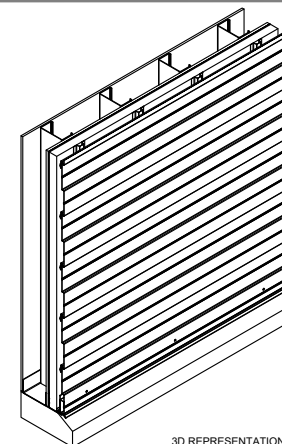
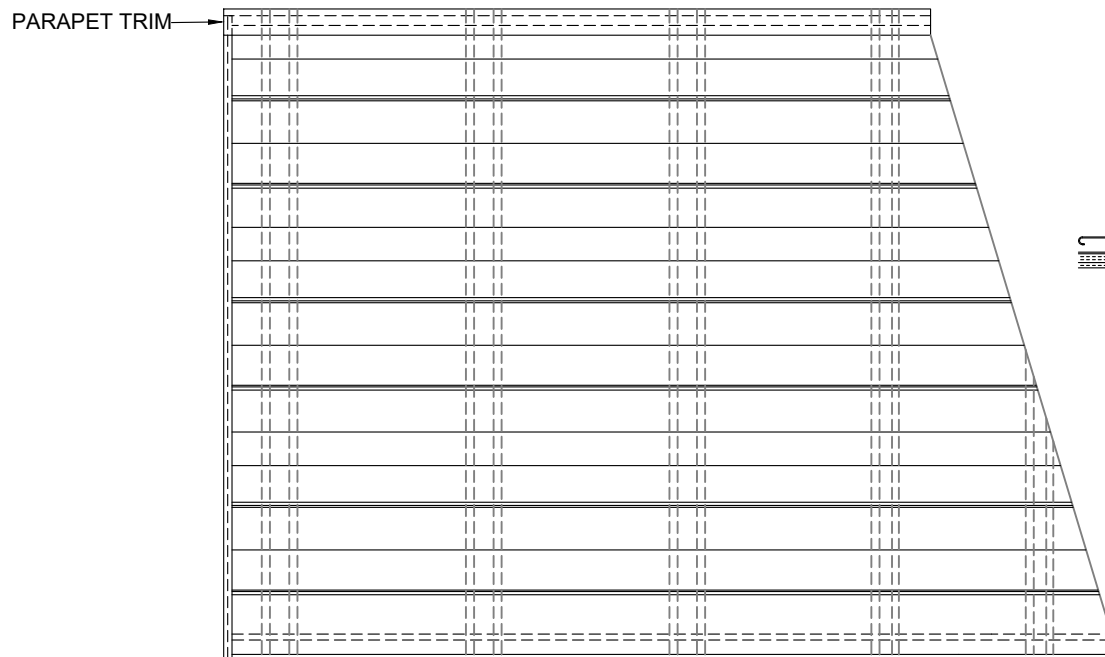
3856 RUE IMELDA-LEFEBVRE, SHERBROOKE
QC J1N 1B2
(819) 791-3276

TECHNICAL FILE

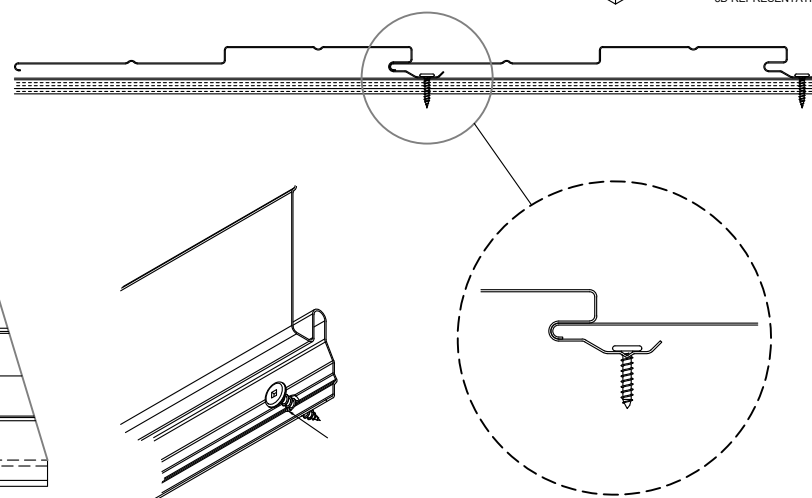
DESIGN WALL

HORIZONTAL INSTALLATION OPEN FRAMING

ELEVATION



3D REPRESENTATION



NOTES :

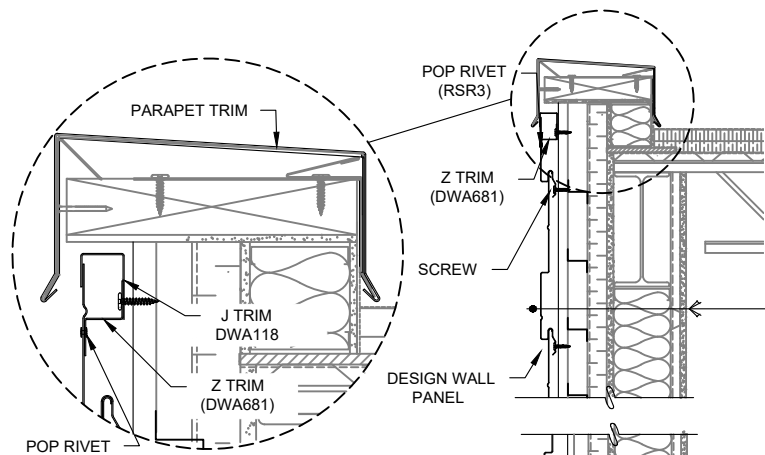
- THE EXPANSION OF ALUMINUM AND STEEL DEPENDS ON A COMBINATION OF SEVERAL FACTORS: THE LENGTH AND WIDTH OF THE PANEL, THE THICKNESS OF THE MATERIAL, ITS COLOR, THE LEVEL OF SUN EXPOSURE, THE TEMPERATURE DURING INSTALLATION. PROVIDE SUFFICIENT EXPANSION SPACE ACCORDING TO THESE FACTORS (SEE EXPANSION FACTOR TABLE).
- THE PANEL IS INSTALLED FROM TOP TO BOTTOM
- METAL SUBGIRT INSTALLATION AT 24" C/C. (610MM) (IF THE SPACING IS DIFFERENT, REFER TO THE TABLE OF CHARGES)

DESIGN WALL

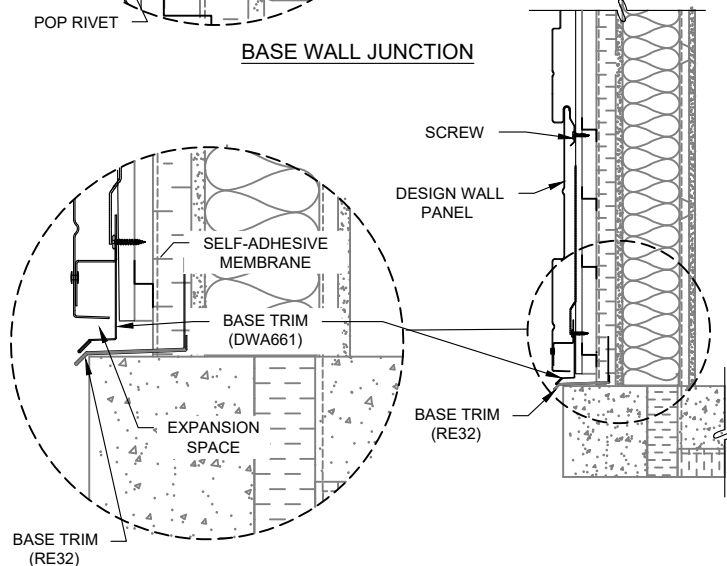
HORIZONTAL INSTALLATION OPEN FRAMING

WALL STRUCTURE

PARAPET JUNCTION



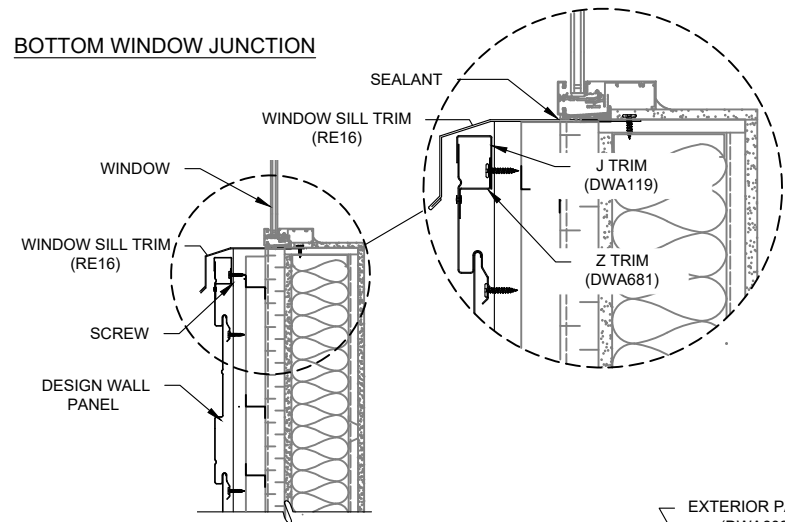
BASE WALL JUNCTION



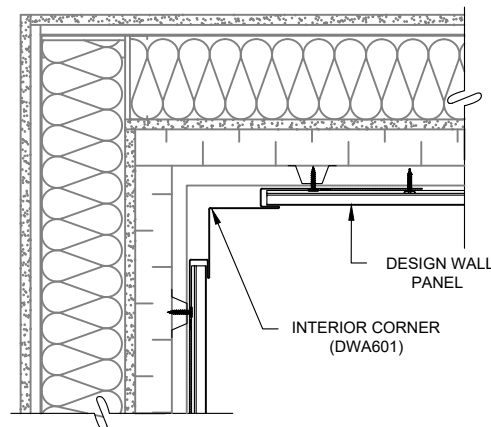
EXTERIOR WALL

- DESIGN WALL METAL PANEL
- VERTICAL METAL SUBGIRT
- HORIZONTAL Z BARS
- INSULATION PANEL
- AIR BARRIER MEMBRANE
- EXTERIOR GYPSE
- METAL STUD
- MINERAL FIBER INSULATION
- VAPOR BARRIER MEMBRANE
- HORIZONTAL METAL SUBGIRT
- GYPSE PANEL

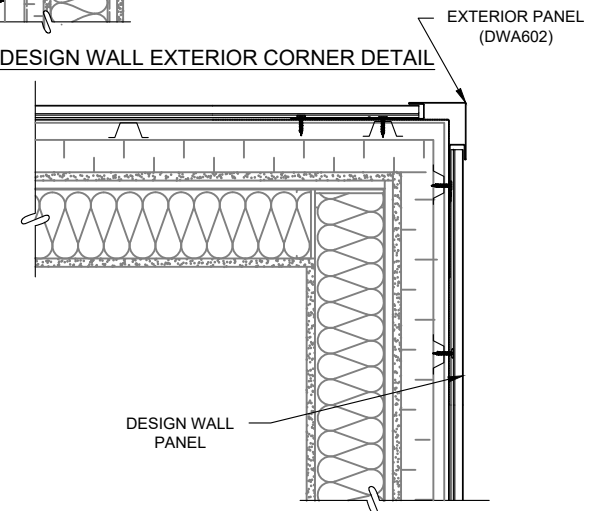
BOTTOM WINDOW JUNCTION



DESIGN WALL INTERIOR CORNER DETAIL



DESIGN WALL EXTERIOR CORNER DETAIL



NOTES :

PROVIDE A THERMAL EXPANSION SPACE AT THE BOTTOM OF THE PANEL
(SEE EXPANSION FACTOR TABLE)
WALL CUT FOR INFORMATION ONLY



ARCHITECTURAL METAL SIDING • ROOFING

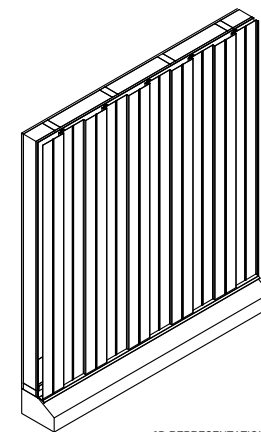
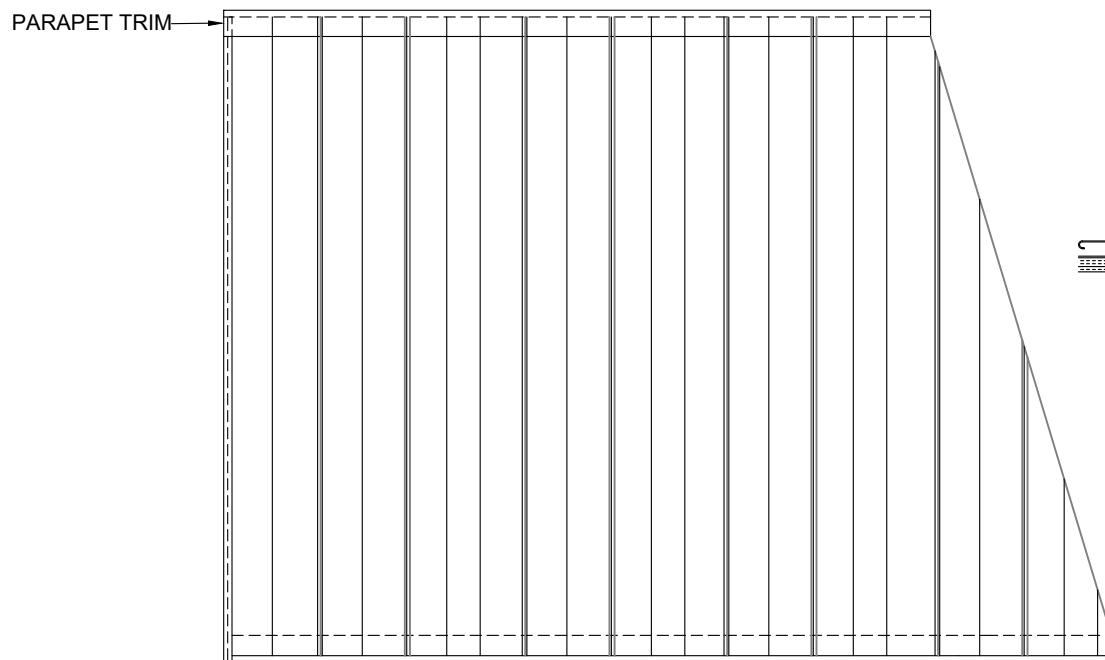
3856 RUE IMELDA-LEFEBVRE, SHERBROOKE
QC J1N 1B2
(819) 791-3276

TECHNICAL FILE

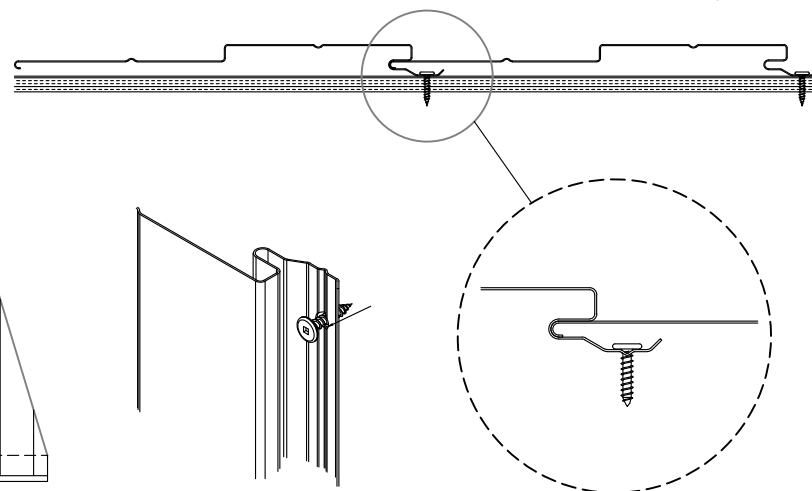
DESIGN WALL

VERTICAL INSTALLATION SOLID SUBSTRATE

ELEVATION



3D REPRESENTATION



NOTES :

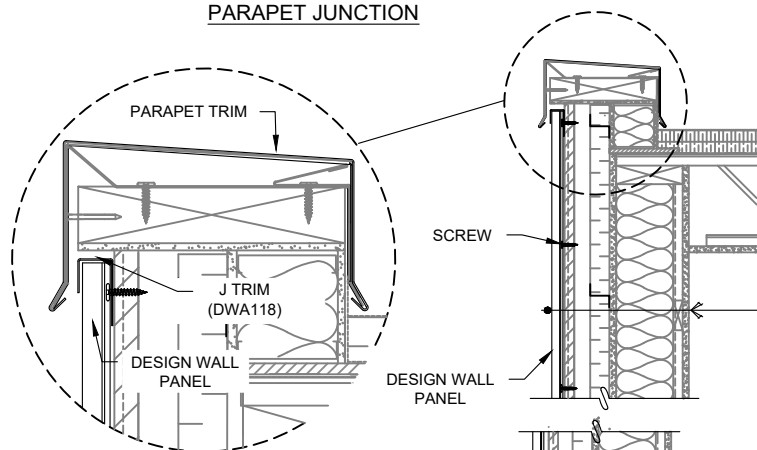
THE EXPANSION OF ALUMINUM AND STEEL DEPENDS ON A COMBINATION OF SEVERAL FACTORS: THE LENGTH AND WIDTH OF THE PANEL, THE THICKNESS OF THE MATERIAL, ITS COLOR, THE LEVEL OF SUN EXPOSURE, THE TEMPERATURE DURING INSTALLATION. PROVIDE SUFFICIENT EXPANSION SPACE ACCORDING TO THESE FACTORS (SEE EXPANSION FACTOR TABLE).

THE PANEL IS INSTALLED FROM LEFT TO RIGHT.

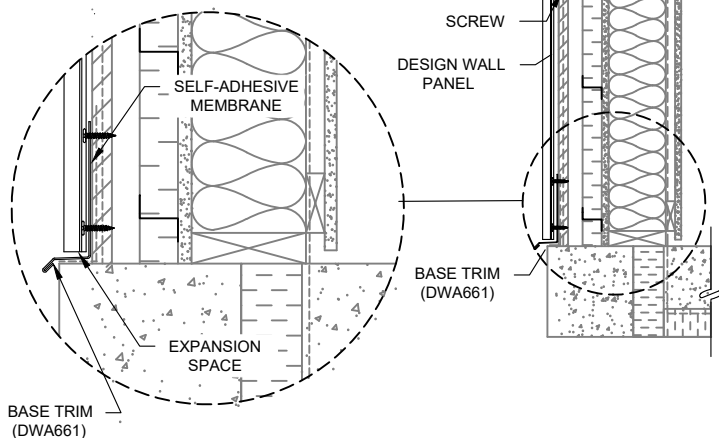
VERTICAL INSTALLATION SOLID SUBSTRATE

WALL STRUCTURE

PARAPET JUNCTION



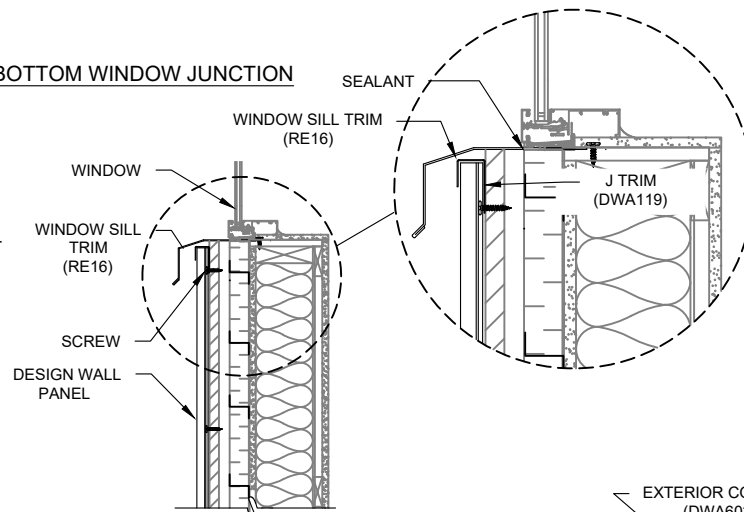
BASE WALL JUNCTION



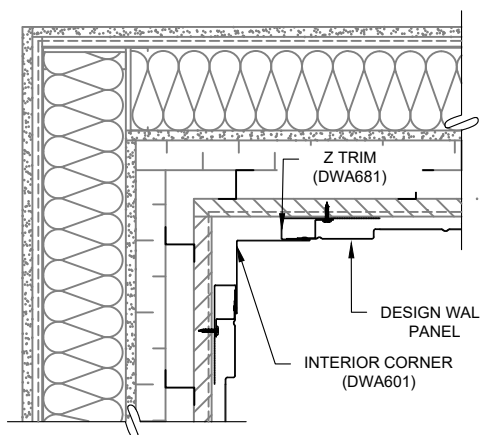
EXTERIOR WALL

- DESIGN WALL METAL PANEL
- SELF ADHESIVE MEMBRANE
- 5/8" PLYWOOD SHEATING
- VERTICAL Z BARS OR METAL SUBGIRT
- INSULATION PANEL
- AIR BARRIER MEMBRANE
- EXTERIOR GYPSE
- WOOD STUD
- MINERAL FIBER INSULATION
- VAPOR BARRIER MEMBRANE
- HORIZONATAL WOOD BATTEN
- GYPSE PANEL

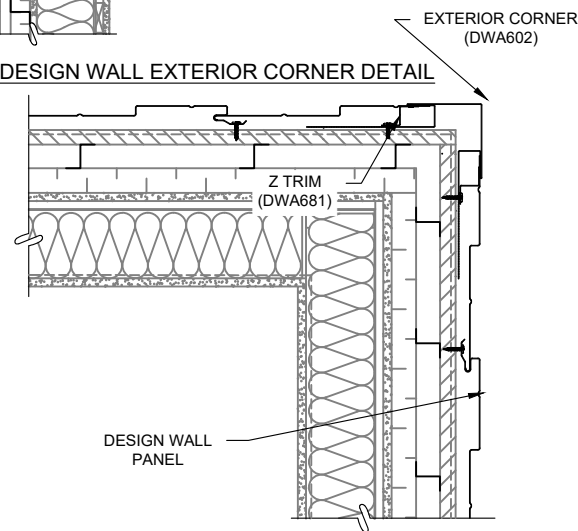
BOTTOM WINDOW JUNCTION



DESIGN WALL INTERIOR CORNER DETAIL



DESIGN WALL EXTERIOR CORNER DETAIL



NOTES :

PROVIDE A THERMAL EXPANSION SPACE AT THE BOTTOM OF THE PANEL
(SEE EXPANSION FACTOR TABLE)
WALL CUT FOR INFORMATION ONLY



ARCHITECTURAL METAL SIDING • ROOFING

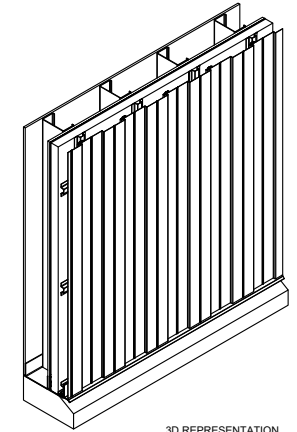
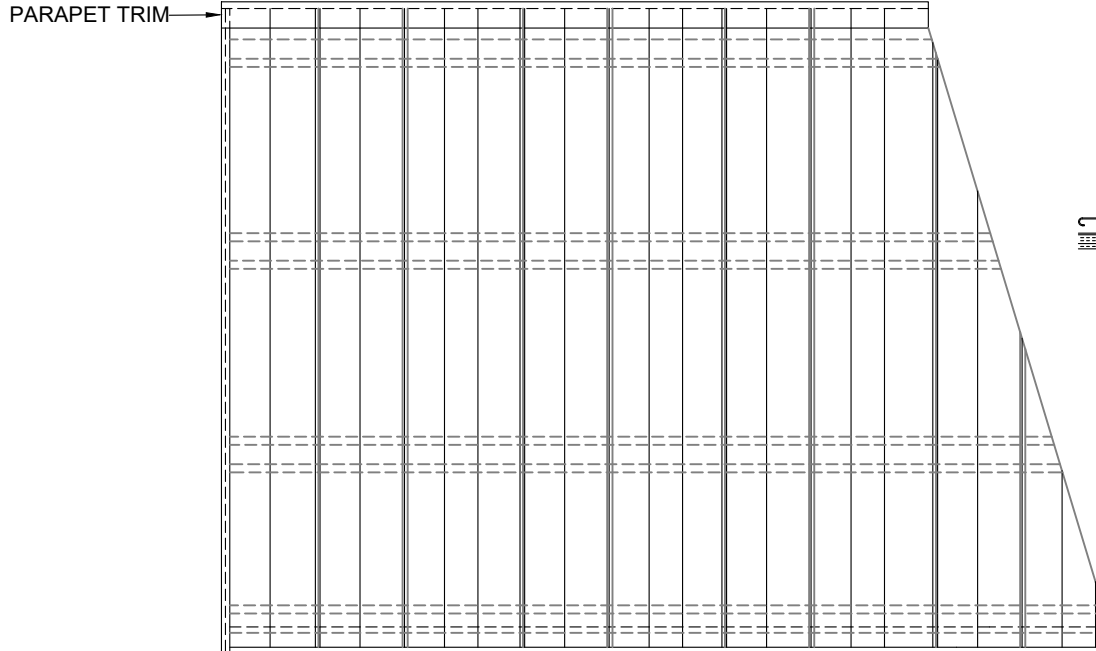
3856 RUE IMELDA-LEFEBVRE, SHERBROOKE
QC J1N 1B2
(819) 791-3276

TECHNICAL FILE

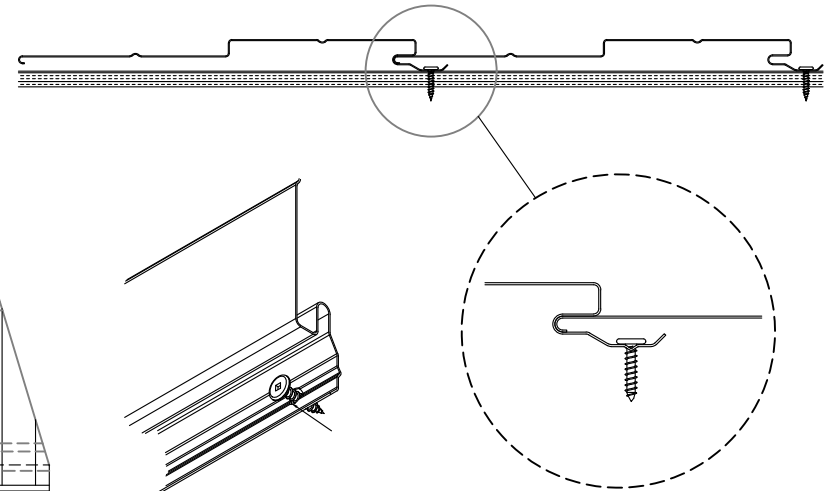
DESIGN WALL

VERTICAL INSTALLATION OPEN FRAMING

ELEVATION



3D REPRESENTATION



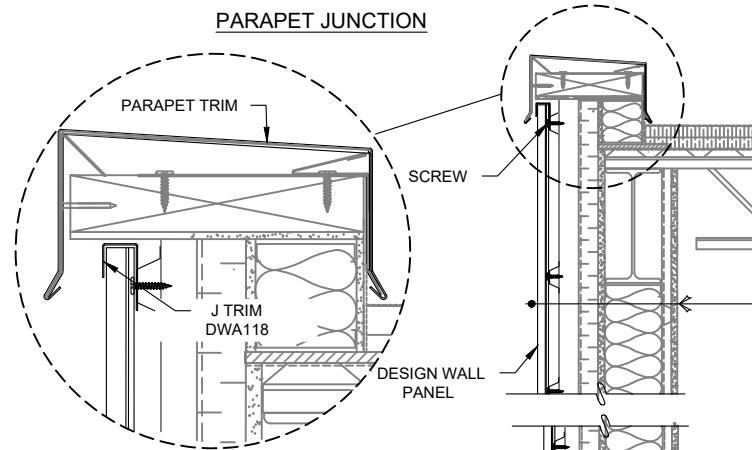
NOTES :

- THE EXPANSION OF ALUMINUM AND STEEL DEPENDS ON A COMBINATION OF SEVERAL FACTORS: THE LENGTH AND WIDTH OF THE PANEL, THE THICKNESS OF THE MATERIAL, ITS COLOR, THE LEVEL OF SUN EXPOSURE, THE TEMPERATURE DURING INSTALLATION. PROVIDE SUFFICIENT EXPANSION SPACE ACCORDING TO THESE FACTORS (SEE EXPANSION FACTOR TABLE).
- THE PANEL IS INSTALLED FROM TOP TO BOTTOM
- METAL SUBGIRT INSTALLATION AT 24" C/C. (610MM) (IF THE SPACING IS DIFFERENT, REFER TO THE TABLE OF CHARGES)

DESIGN WALL

VERTICAL INSTALLATION OPEN FRAMING

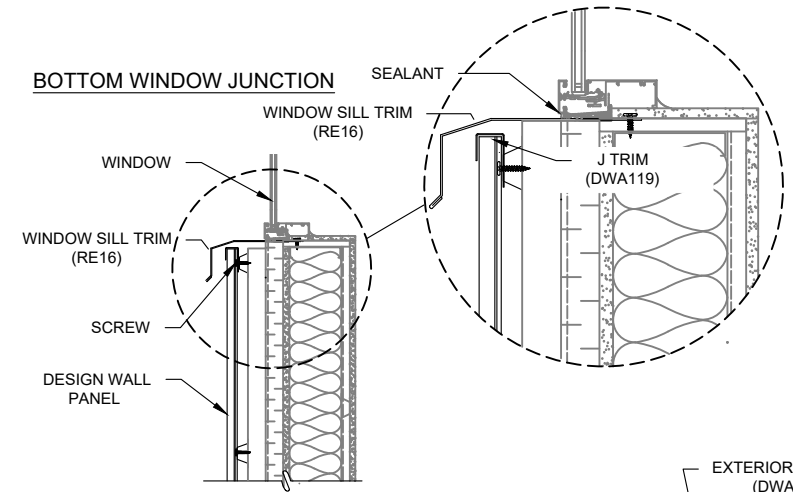
WALL STRUCTURE



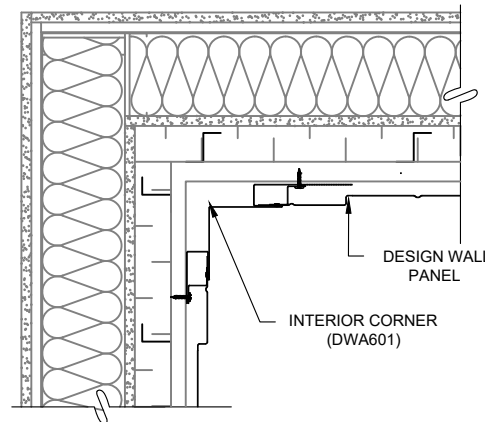
EXTERIOR WALL

- DESIGN WALL METAL PANEL
- VERTICAL METAL SUBGIRT
- HORIZONTAL Z BARS
- INSULATION PANEL
- AIR BARRIER MEMBRANE
- EXTERIOR GYPSE
- METAL STUD
- MINERAL FIBER INSULATION
- VAPOR BARRIER MEMBRANE
- HORIZONTAL METAL SUBGIRT
- GYPSE PANEL

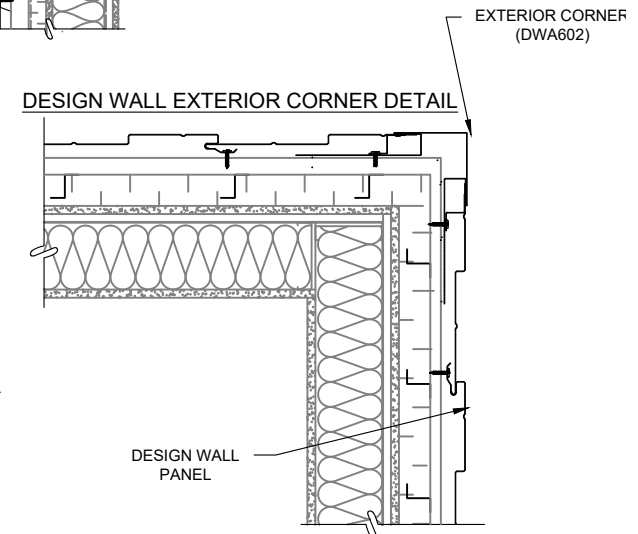
BOTTOM WINDOW JUNCTION



DESIGN WALL INTERIOR CORNER DETAIL



DESIGN WALL EXTERIOR CORNER DETAIL

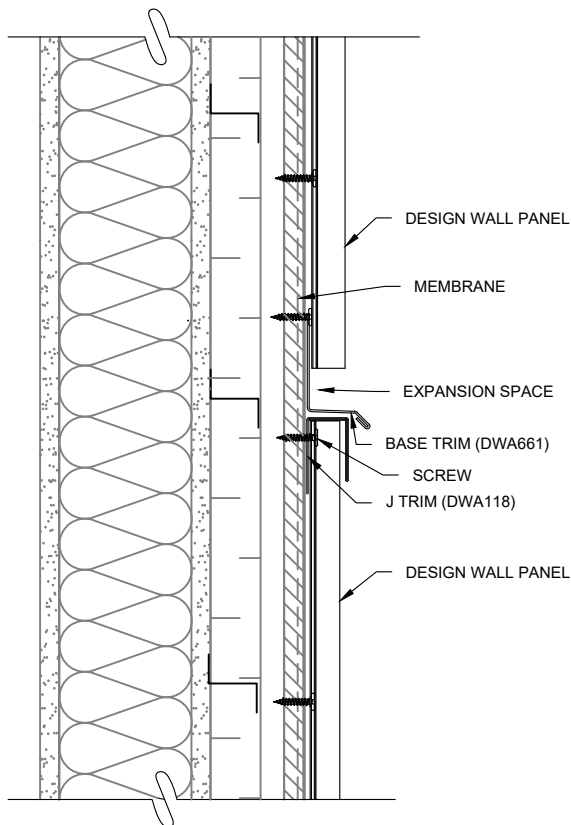


NOTES :

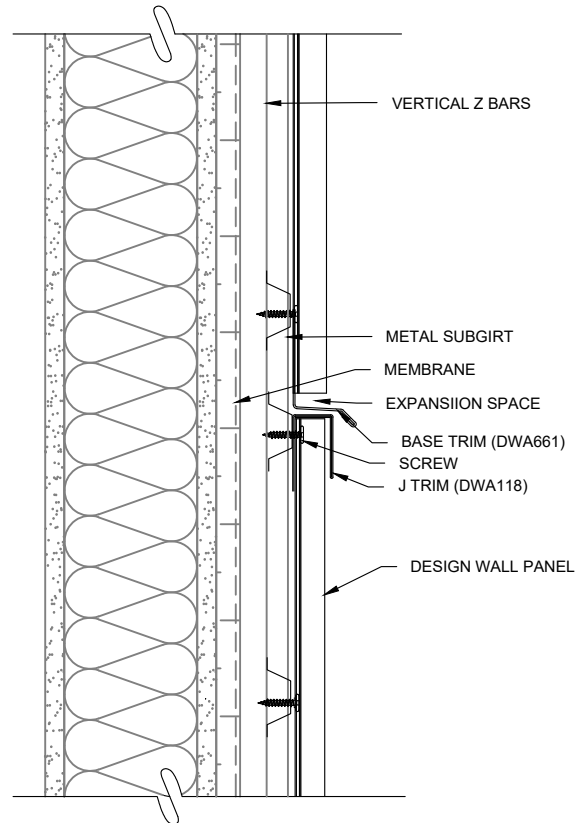
PROVIDE A THERMAL EXPANSION SPACE AT THE BOTTOM OF THE PANEL
(SEE EXPANSION FACTOR TABLE)
WALL CUT FOR INFORMATION ONLY

PANEL INSTALLATION - SPECIFIC DETAILS

HORIZONTAL TRANSITION INSTALLATION
SOLID SUBSTRATE - PANEL INSTALLED
VERTICALLY

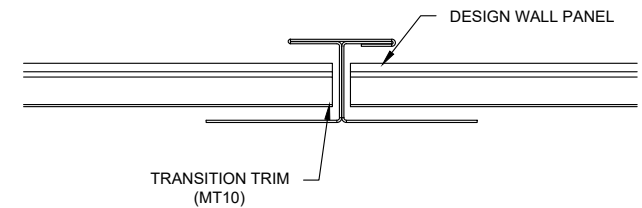


HORIZONTAL TRANSITION INSTALLATION
OPEN FRAMING - PANEL INSTALLED
VERTICALLY

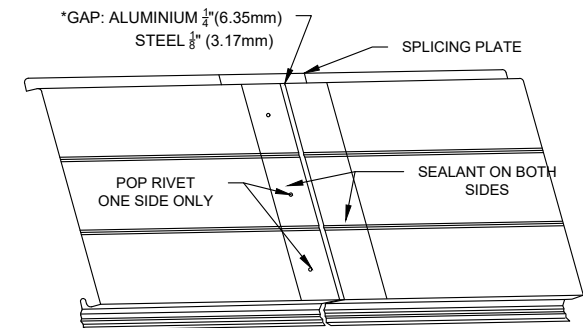


VERTICAL TRANSITION INSTALLATION -
PANEL INSTALLED HORIZONTALLY

OPTION 1 : TRANSITION TRIM
PLAN VIEW



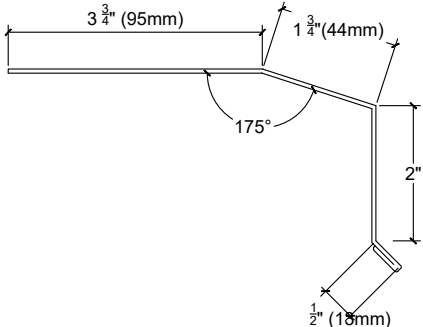
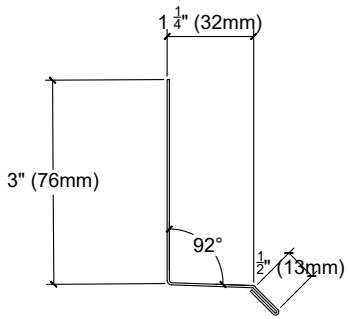
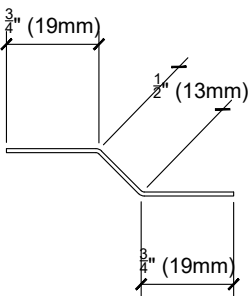
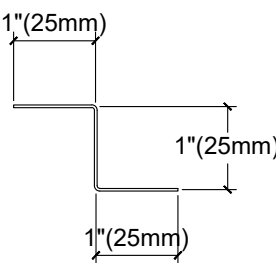
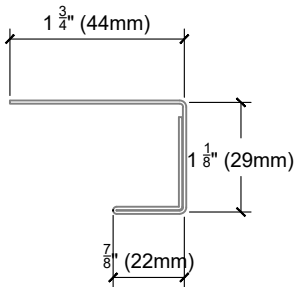
OPTION 2 : SPLICING PLATE



PANEL SPLICE NOTE :

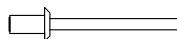
THE JUNCTION SPLICE IS APPLICABLE ONLY ON HORIZONTAL INSTALLATION AT A MAXIMUM PANEL LENGTH OF 21 FEET.

TRIMS AND ACCESSORIES

<p>WINDOW SILL TRIM (RE16) RAW MATERIAL : 8,5" (216mm)</p> 		<p>BASE TRIM (DWA661) RAW MATERIAL : 5,25" (134mm)</p> 	
<p>PANEL SUPPORT TRIM (DWA975) RAW MATERIAL : 2.0" (51mm)</p> 	<p>Z TRIM (DWA681) RAW MATERIAL : 3.0" (76mm)</p> 	<p>J TRIM (DWA118) RAW MATERIAL : 5,75" (146mm)</p> 	

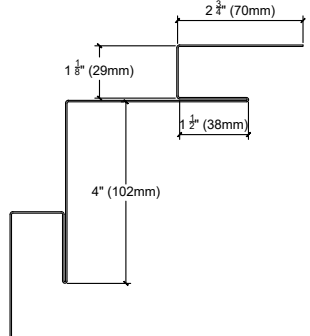
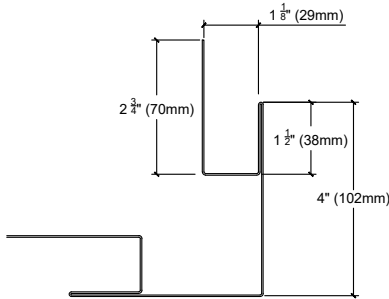
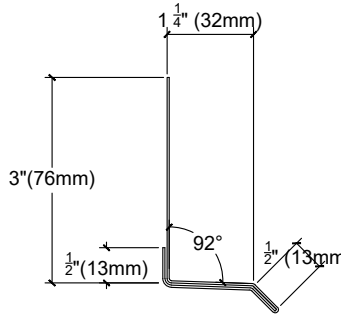
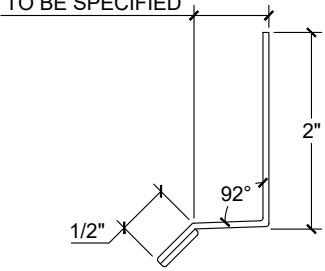
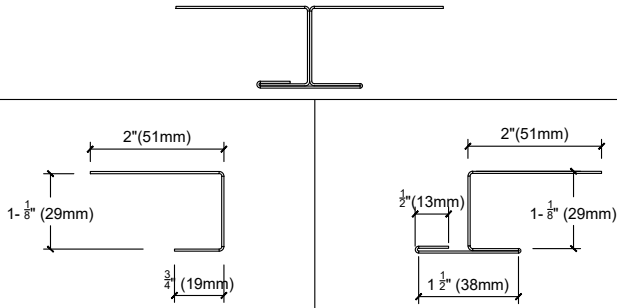
NOTE FOR TRIMS :

- THE EXPANSION OF ALUMINUM AND STEEL DEPENDS ON A COMBINATION OF SEVERAL FACTORS: THE LENGTH AND WIDTH OF THE PANEL, THE THICKNESS OF THE MATERIAL, ITS COLOR, THE LEVEL OF SUN EXPOSURE, THE TEMPERATURE DURING INSTALLATION. PROVIDE SUFFICIENT EXPANSION SPACE ACCORDING TO THESE FACTORS (SEE EXPANSION FACTOR TABLE).



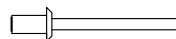
POP RIVET
(RSR3)
PAINTED STAINLESS STEEL

TRIMS AND ACCESSORIES

<p>INTERIOR CORNER (DWA601) RAW MATERIAL : 15,75" (400mm)</p> 	<p>EXTERIOR CORNER (DWA602) RAW MATERIAL : 15,75" (400mm)</p> 	<p>BASE TRIM (DWA662) RAW MATERIAL : 7.50" (191mm)</p> 
<p>BASE TRIM (RE32) RAW MATERIAL : TO SPECIFY</p> <p>TO BE SPECIFIED</p> 	<p>TRANSITION TRIM (MT10) RAW MATERIAL : 9" (229mm)</p> 	

NOTE FOR TRIMS :

- THE EXPANSION OF ALUMINUM AND STEEL DEPENDS ON A COMBINATION OF SEVERAL FACTORS: THE LENGTH AND WIDTH OF THE PANEL, THE THICKNESS OF THE MATERIAL, ITS COLOR, THE LEVEL OF SUN EXPOSURE, THE TEMPERATURE DURING INSTALLATION. PROVIDE SUFFICIENT EXPANSION SPACE ACCORDING TO THESE FACTORS (SEE EXPANSION FACTOR TABLE).



POP RIVET
(RSR3)
PAINTED STAINLESS STEEL